



CAST & PRECISION TOOLED PLAQUES



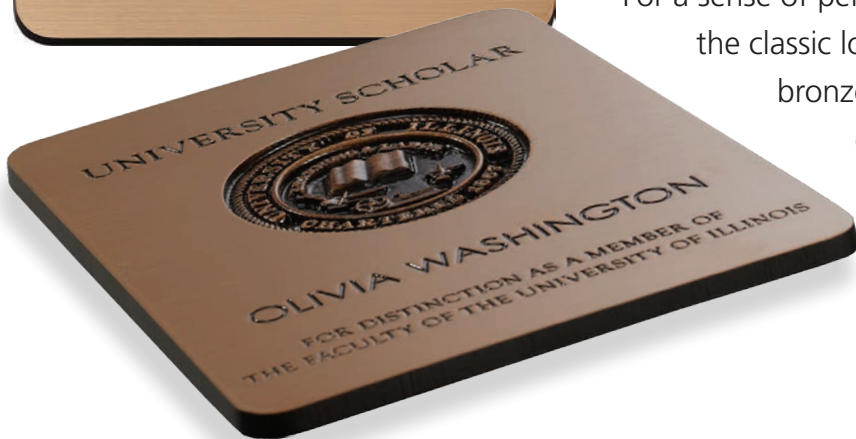
- Typical 8 days production after art approval
- Earth-friendly lead and mercury-free alloys
- 11 finish options
- Integrated custom logos, emblems or portraits



Classic & Permanent Incredible Variety

For a sense of permanency and architectural depth, consider the classic look of Gemini cast and precision tooled bronze, brass or aluminum plaques, logos and emblems. Ideal for professional offices,

university and government buildings, and commemorative uses, these plaques are available in 11 different finishes, including polished, painted or oxidized. Using only the purest, lead-free alloys, Gemini's cast and precision tooled plaques are available in various depths.





Metal Plaques

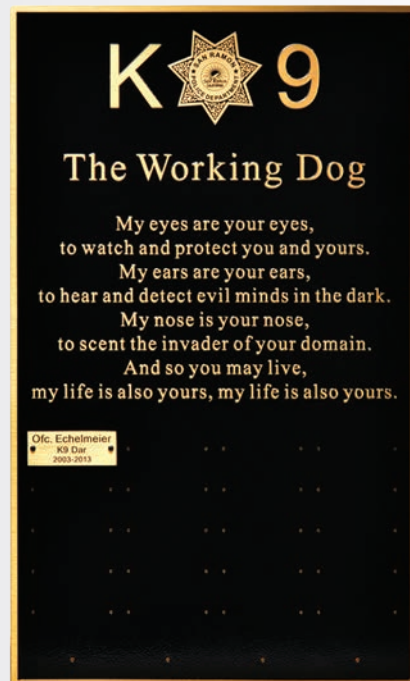
Gemini cast and precision tooled plaques offer a sense of permanency with a classic look and architectural depth. A range of metals and finishes makes these plaques ideal for almost any application.

Gemini Plaque Advantages:

- Dedicated Customer Service team
- Industry leading 8 day lead time
- No rush charges or extra surcharges
- Superb quality and competitively priced
- The broadest manufacturing platforms.
You choose what's best for your application.



Polished Bronze, recessed letters & graphics, black sand background, 15" x 15"



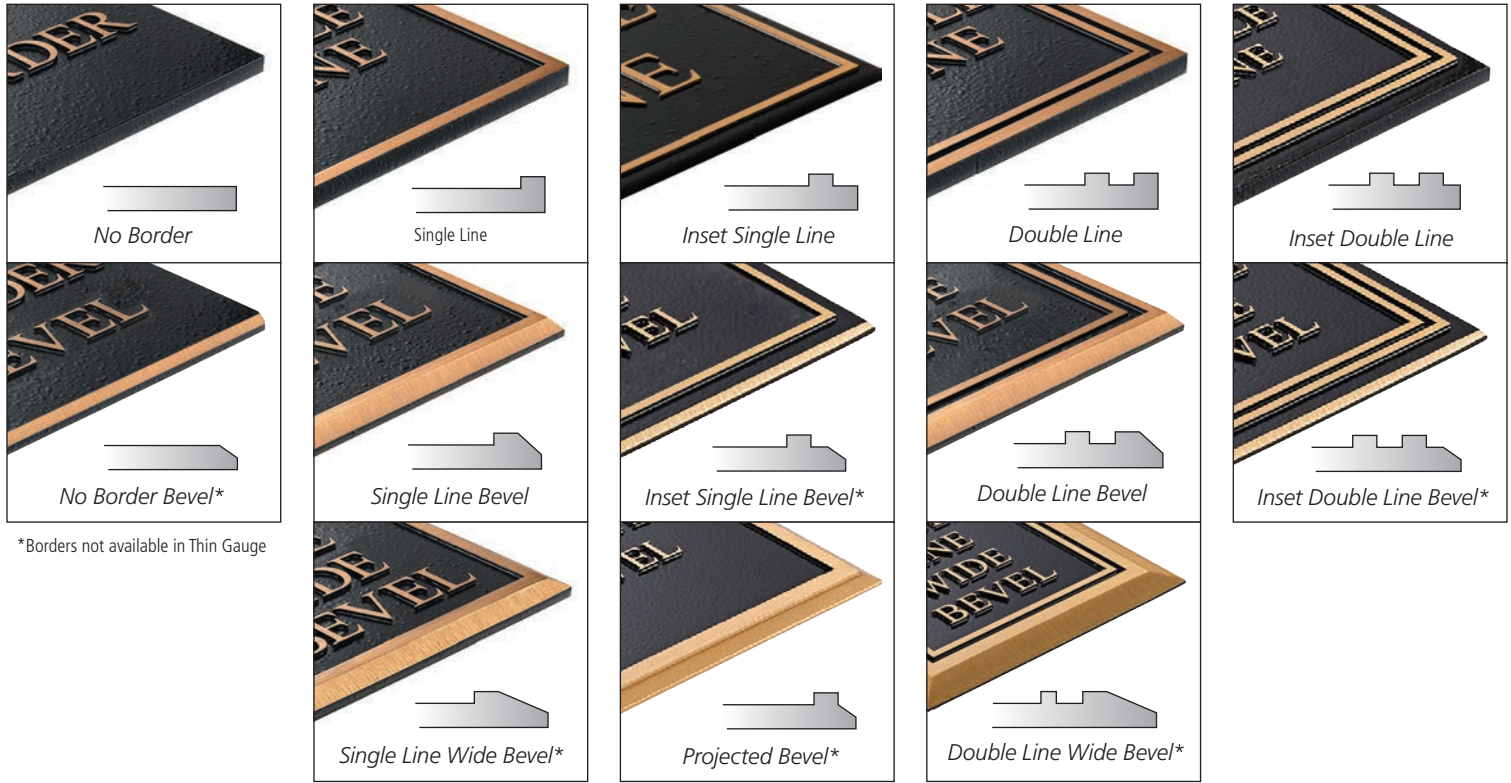
Brushed bronze, raised graphics, individual etched memorial plate, black sand background, 24" x 36"



Brushed bronze, raised graphics, black border and maroon background, 18" x 12"

Standard Borders

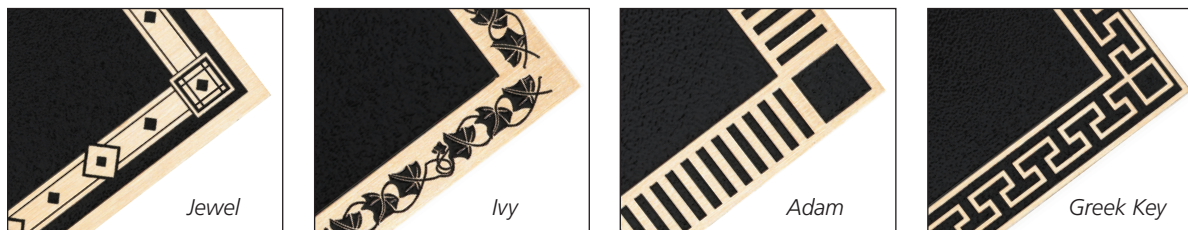
Border finish matches plaque copy. Other borders are also available. Email for a quote. (Illustrations not to scale) Edge color matches background color.



*Borders not available in Thin Gauge

Custom Borders

These precision tooled decorative borders are available for \$50. Other borders are also available. Please email for a quote.



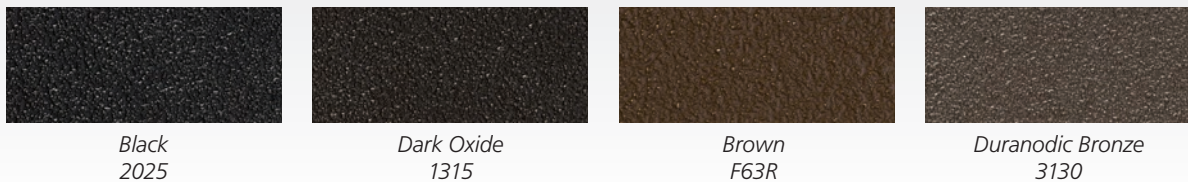
Cast sculpted borders available:
\$4.25/linear inch



ex. Sculpted Cast

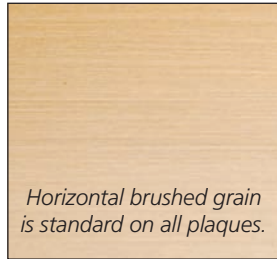
Most Common Background Colors

Other standard painted colors shown on page 51. Custom colors available (\$25 per color match).

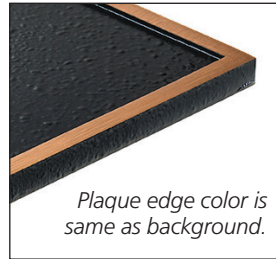


Standard Finish Options

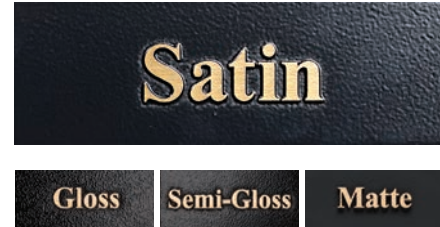
Brushed Finish



Edge Color



Clear Coat Options



Satin is standard on brushed finishes. Gloss is standard on polished finishes. Matte is standard on PhotoRelief™. Clear coat for harsh environments is also available upon request at no charge.

Specialty Finish Options

Bronze Finishes

Oxidized finishes vary from order to order. Size limitations may apply.



Light Oxidized (+15%)



Oxidized (+15%)



Dark Oxidized (+15%)

Verde, Turquoise & Green Patina finishes available. Add 30% All patinas, by their very nature, will vary from plaque to plaque and order to order, and will change over time. Patina finishes may "bleed" onto the installation surface when installed outside.

Other Finishes



Flash Bronze (+15%)
Interior Applications Only



Raised Painted Copy
(Up to 2 additional colors
- \$80per color)

Multi-colored (4 colors or more)
raised & recessed areas
Email for quote

Polished Finishes



Polished Bronze (+50%)



Polished Brass (+60%)
Precision Tooled Only

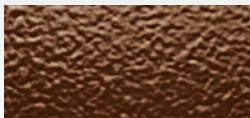


Polished Aluminum (+50%)
Precision Tooled Only

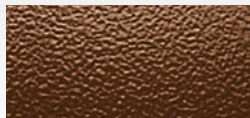


Buffed Aluminum (+50%)
Cast

Bronze, Brass & Aluminum Background Textures



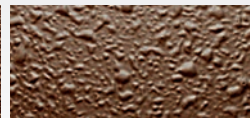
Leatherette
(max. dimension 84")



Stipple
(max. dimension 84")



Sand



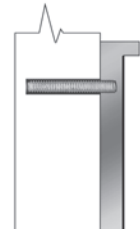
Pebble



Classic Leather
Cast only
(28" x 48" max.)

Surface Mounts

Plaques installed on stucco require spacers on studs. Installation tips can be found at GeminiSignage.com > Resources > Installation & Maintenance



Blind Mount (Type A)

Drilled & Tapped



Solid Wall Mount (Type B)



Hollow Wall Mount (Type C)



Wood Mount (Type D)



Stud Boss Mount (Type AW)

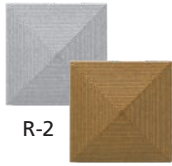
Plaques thinner than 1/4" can be stud mounted with welded stud bosses.

Rosettes

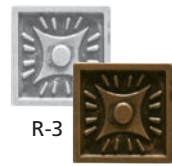
Optional Rosettes are decorative covers for the screw heads, typically in each corner of bronze and aluminum plaques (included in price). Rosettes are available in 1/2", 3/4", 1" and 1-1/2" diameters. Rosettes with highlights are oxidized, aluminum rosettes are bead blasted. Screw heads are painted to match plaque background. Additional and replacement rosettes are \$23.50 each.



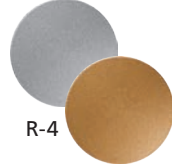
R-1



R-2



R-3



R-4

1" & 1-1/2" only



R-5



R-6



R-7

1" & 1-1/2" only

Stake Mounts

Garden Stake Mount (Type E)

Machine screws through 5/16" thick black anodized stakes into back of plaque. Maximum plaque size is 12" x 8" for one stake or 20" x 8" for two stakes. Minimum plaque height is 4"



GARDEN STAKES

24"	\$90 ea.
36"	\$106 ea.
48"	\$125 ea.

Post Mount (Type F)

Black painted aluminum brackets attach to back of plaque with machine screws. Aluminum square post bolts into bracket at a 45° or 90° angle. Plaques over 24" wide require two posts. 1" Post is on a 4" x 6" bracket. 1-1/2" Post is on a 5" x 7" bracket. 2" Post is on a 6" x 8" bracket.

POST MOUNTS

For plaques up to 250 sq. in.	
6' x 1" Post	\$147
8' x 1" Post	\$197
For plaques up to 450 sq. in.	
6' x 1-1/2" Post	\$192
8' x 1-1/2" Post	\$255
For plaques up to 720 sq. in.	
6' x 2" Post	\$221
8' x 2" Post	\$295



Military & Government Seals

Gemini offers special pricing on cast seals in the many common military and government designs (including Army, Navy, Air Force, Marines, Coast Guard, Merchant Marines, Department of Homeland Security, POW/MIA, Dept. of Veterans Affairs & **NEW Space Force**). Other seals not shown can be manufactured for an additional cost. Email for quote. Multi-color seals can also be produced with an additional charge. Contact Gemini for more information about available seal designs and options.

Cast Seal Pricing: page 35

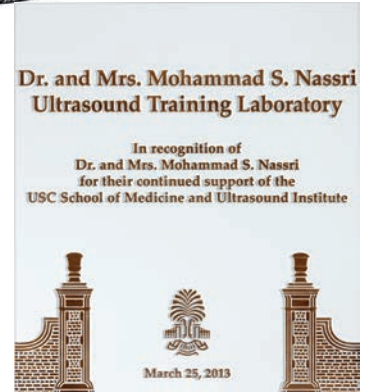
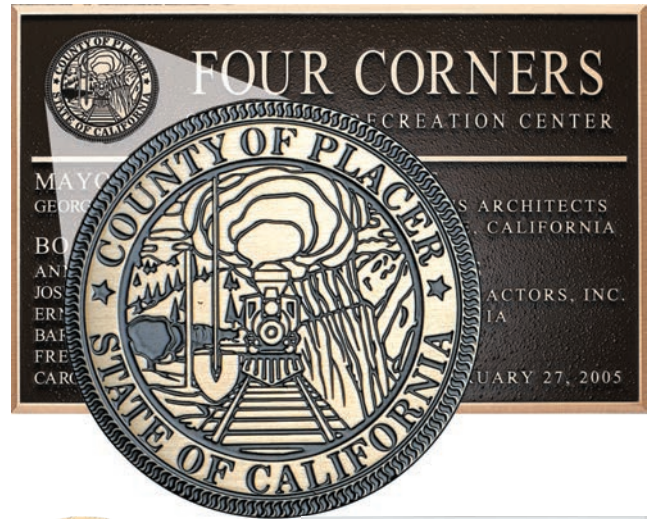


NEW Space Force

Integrated logos & emblems

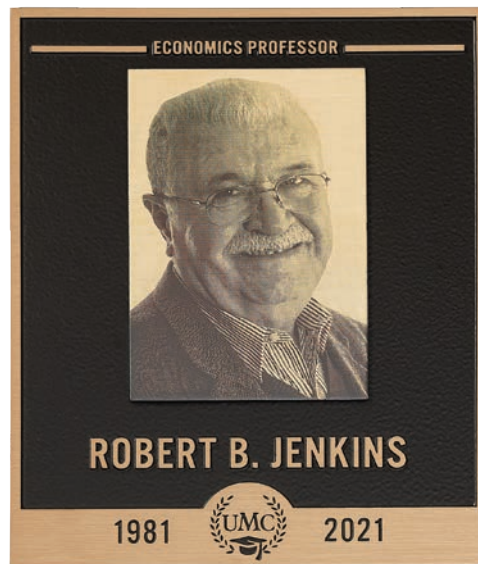
Gemini has the capability to add a custom emblem or logo to your plaque in one of two ways. The emblem or logo can either be cast as part of the plaque, or crafted as a separate etched piece and attached to the plaque. Image detail is somewhat limited by the manufacturing process when cast, but the cost is included in the price of the plaque. There are nearly no detail restrictions with an etched emblem; however, additional charges will apply.

*UP TO 10"–Etched Line Art Insert (shown)-ADD \$155
Etched Photo Insert-ADD \$390*



Etched Portrait on Metal

The etching process allows you to forever replicate your photograph, line drawing or complex artwork in beautiful detail. This method utilizes a halftone dot pattern made from a 50-line screen. Halftone portraits resemble newspaper photographs, and have visible dot patterns. The etched, recessed dots are filled with black paint to contrast with the brushed finish of the metal background. The best photographs for halftone etched portraits have high contrast tones with bright white areas, dense black areas and minimal gray tones. (Photos that are monotone or have muted colors will produce poor halftone etchings.) Halftone etchings are available in **stainless steel, bronze, brass and copper**. Up to 10" - \$390 - Larger than 10", call or email for quote. Price shown does not include the cost of the plaque

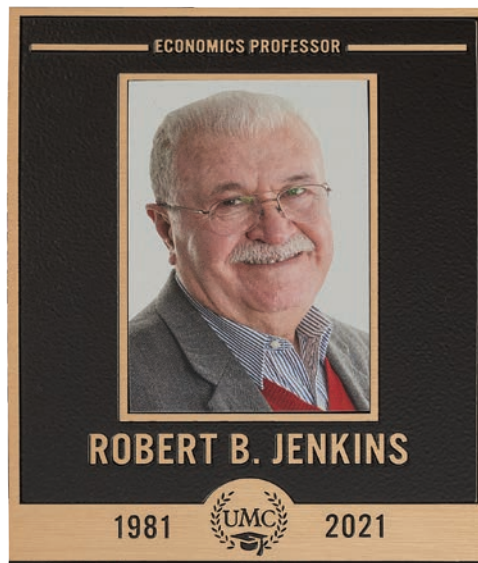


UV Print Insert

Gemini can apply your images as inserts into your architectural plaques. Our hi-resolution printers render UV-cured, non-elastic inks at up to 1200 dpi.

The combination of our high-resolution printing and premium base materials results in a picture perfect product that is excellent for all indoor applications and even some exterior ones.

Up to 10" x 10" - \$90.

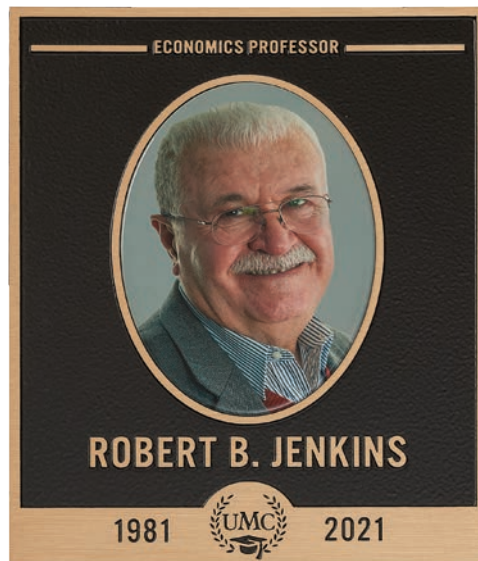


Oval & Rectangular Ceramic Inserts

A standard-sized blank base with a full-color digital transfer applied to the blank. Additional lead time may apply.

SHAPE	SIZE	PRICE	SHAPE	SIZE	PRICE
Rectangle	2.3" X 3.1"	\$372	Oval	2.3" x 3.1"	\$343
Rectangle	2.7" x 3.5"	374	Oval	2.7" x 3.5"	346
Rectangle	3.1" X 3.9"	374	Oval	3.1" x 3.9"	346
Rectangle	3.5" X 4.7"	376	Oval	3.5" x 4.7"	347
Rectangle	4.3" x 5.9"	396	Oval	4.3" x 5.9"	365
Rectangle	5.1" x 7.1"	417	Oval	5.1" x 7.1"	385
Rectangle	7.1" x 9.4"	585	Oval	7.1" x 9.4"	539

Ceramic insert pricing is for stand-alone inserts. Pricing with plaque order is less \$50.



Seals & Circular Plaques

The tables on this page feature pricing for the most common military and government designs in bronze and aluminum, and standard pricing for circular plaques. Other seals not shown can be manufactured for additional costs. Email for quote. Multi-color seals can also be produced in 16" - 40" sizes with an additional charge. For questions and custom quotes, please email Plaques@GeminiSignage.com



Sculpted Relief



Flat Relief

CAST GOVERNMENT SEALS INCLUDE:

- Army
- Navy
- Marines
- Air Force
- Coast Guard
- Merchant Marines
- Department of Homeland Security
- POW / MIA
- Department of Veterans Affairs
- **NEW** Space Force

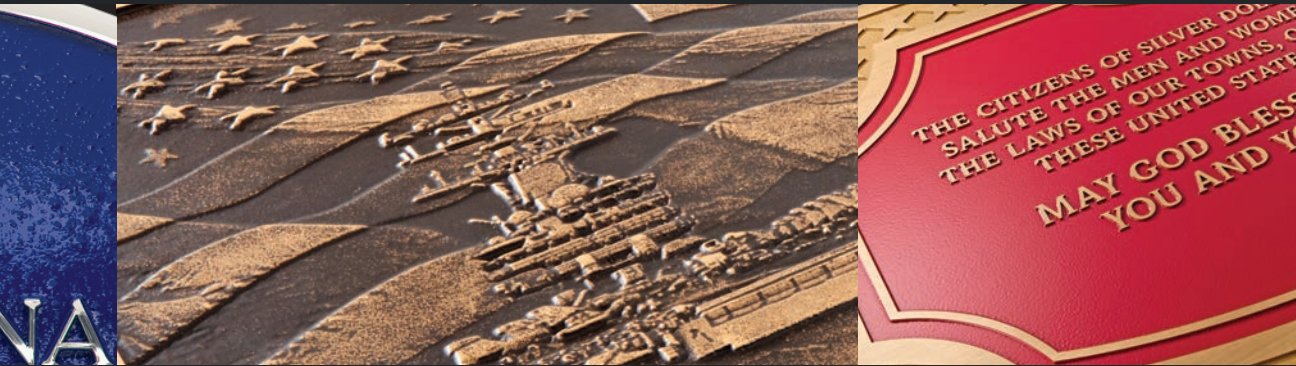
GOVERNMENT SEALS

When you order government seals from Gemini, we are of the understanding that you have all the required rights in place for us to produce your project as requested.



PLAQUES & PLATES HIGHEST QUALITY





MORE INFORMATION?

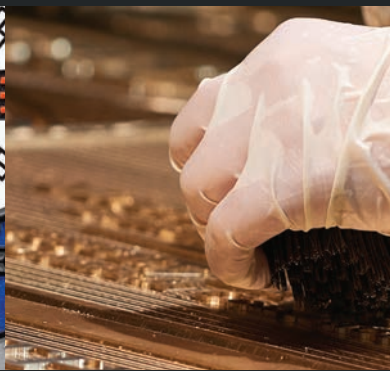
Detailed information on each image can be found in our enhanced digital catalog at GeminiSignage.com

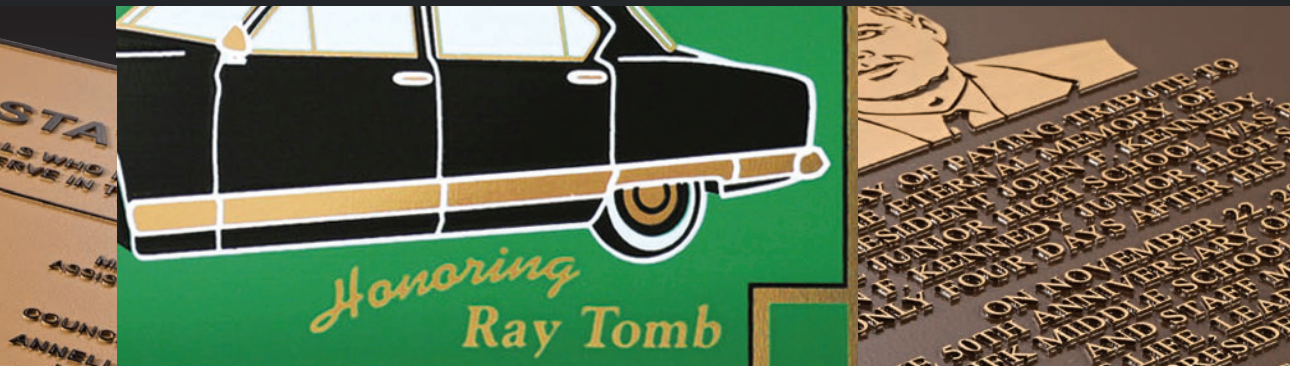
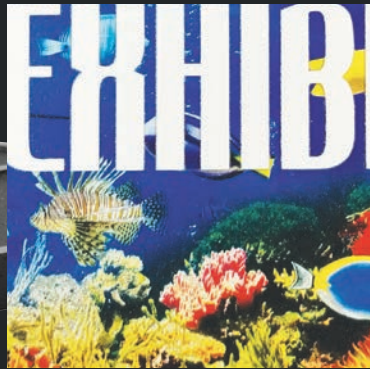
PLAQUES & PLATES HIGHEST QUALITY

straight talkers
industry leading
HONESTY
continuous improvement
family-owned
STEWARDSHIP
transparent
service
investment in people

CUSTOMER
authentic
grow
reliab
FOCUS
happy helpers
win or lose together
convenient
above and beyond
guarantee
integrity
diverse perspectives
STABILITY
made
true

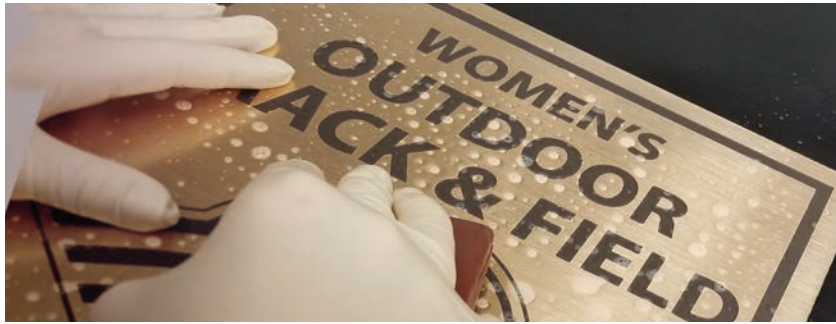
CREATIVITY
seeking





MORE INFORMATION?

Detailed information on each image can be found in our enhanced digital catalog at GeminiSignage.com



ARCHITECTURAL ETCHED PLAQUES



EMINGTON
PARTMENT HOM



- Brass, bronze, copper, stainless steel and aluminum
- Earth-friendly lead and mercury-free alloys
- Recessed or raised graphics
- Line art or photo halftone images
- Typical 8 days production



Precision Detail

Artistic Freedom

Chemical etching, a process that dates back to the Middle Ages, allows us to transfer the most complex artwork to a brass, bronze, copper or stainless steel surface. When used in combination with Gemini's cast and precision tooled plaques, our etched medallions and emblems provide the precision needed to accentuate any plaque or marker.



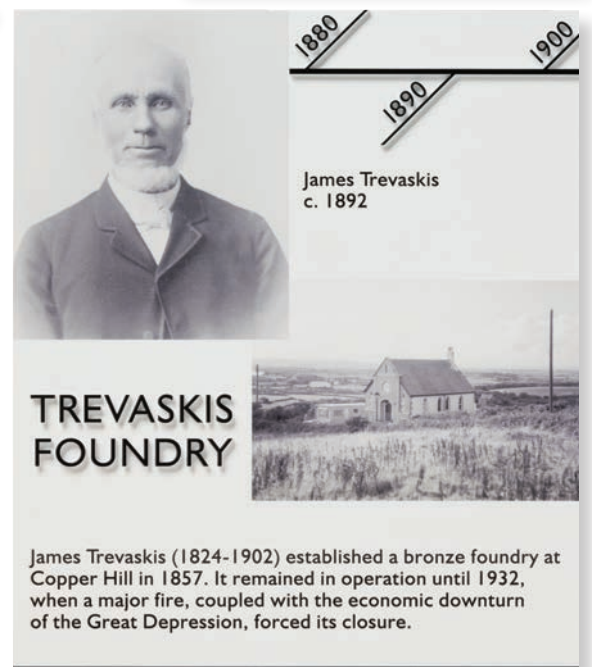
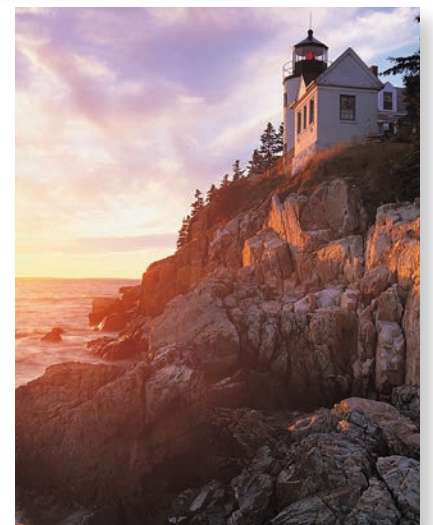
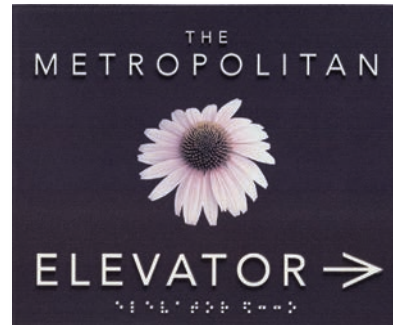
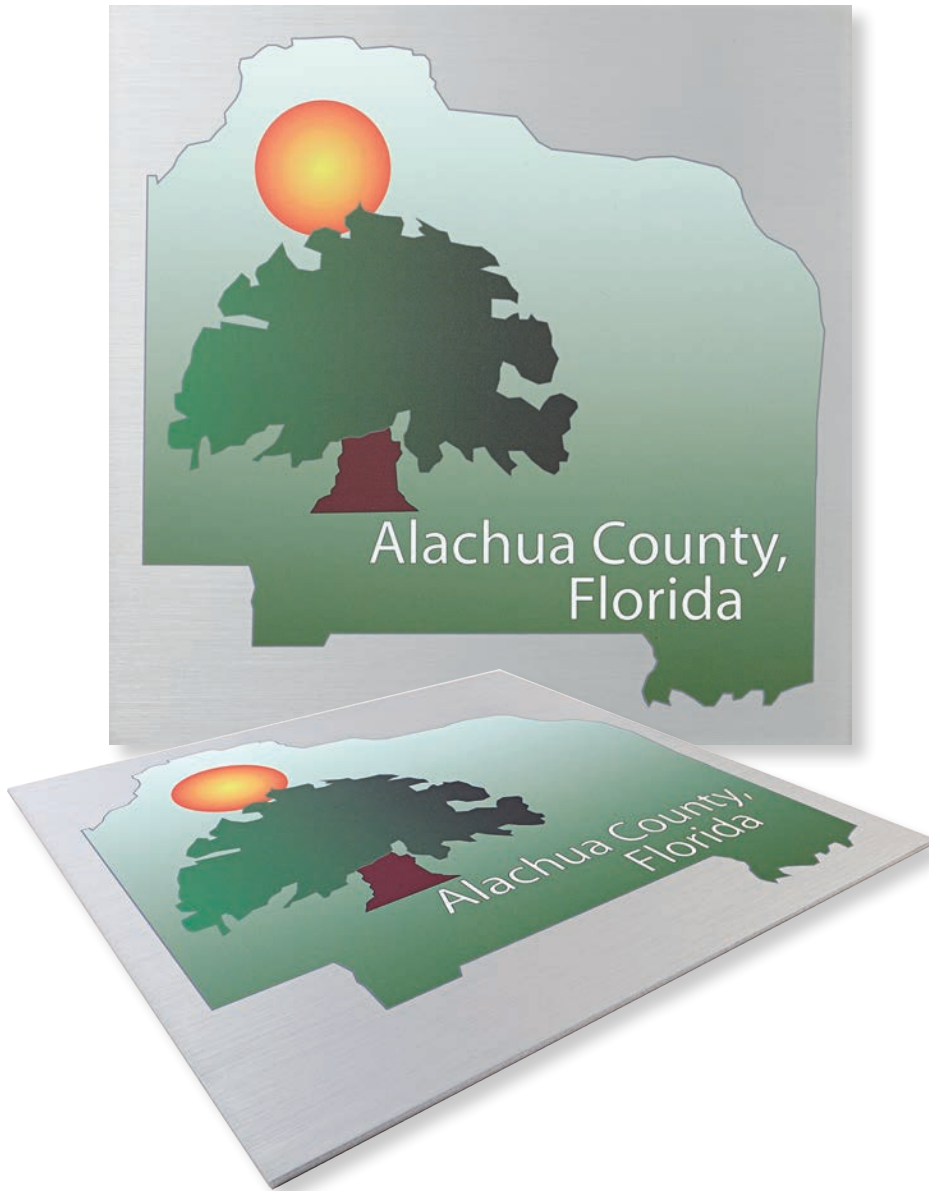


PROFESSOR JAMES DILLON



UV Printing

For use in wayfinding where Braille or raised copy is not required, these panels have your 1200 dpi full-color image printed on aluminum, brass, bronze or stainless steel — simply choose your material, thickness and shape, and supply a high-quality image. Gemini warrants these products for interior use, although they will last under most moderate weathering conditions. Email Plaques@GeminiSignage.com for quote.



Custom ADA Plaques

A truly custom product should not be placed in a cookie cutter shape. Gemini gives you the option to design not only the image and color of your ADA solutions, but also the overall shape of the individual plaques. Even within ADA constraints, Gemini's custom capabilities provide a flexible array of design possibilities. We welcome your custom designs for different colors, patterns, sizes and special features that can all be combined to create room identification signs that are functional and compliant, while coordinating attractively with interior finishes. ADA plaques can be priced using the Precision Tooled pricing pages (24-25 & 30-31) or email Plaques@GeminiSignage.com for quote.



Standard ADA Plaques

Gemini ADA directional signage offers beauty, style and compliance. Plaques are available in the standard 7" x 8.5" x 0.25" size and design, with a stipple or sand background, or in your own custom design. Don't let ADA signage requirements be an eyesore — order solid aluminum, bronze and brass ADA-compliant plaques from Gemini. Unlike other ADA-compliant products, Gemini's patent-pending process does not use loose beads for the Braille component or rely on imperfect, non-compliant castings.

SIZE	ALUMINUM	BRONZE	BRASS
7" x 8.5" x .25"	\$122	\$230	\$254

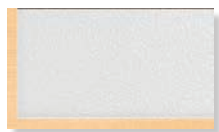
For indoor applications, double face tape can be substituted at no additional charge.

California ADA also available. Email for a quote.

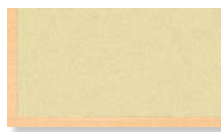
ADA: stipple or sand backgrounds only



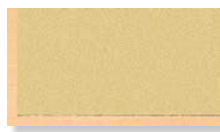
46 Standard Painted Colors



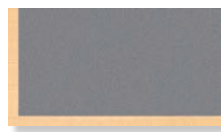
White 5687



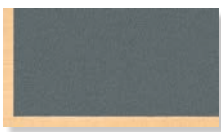
Ivory – 2718



Desert Sand - 4660



Grey – 0209



Dove Grey – 4310



Safety Green – 8090



Lemon Yellow – 2037



Yellow – 2000



Citrus Yellow 0217



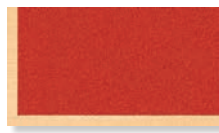
Sundance Yellow 0218



Mango – 0254



Orange – 2119



Red-Orange – 2662



Rampart Orange – 0256



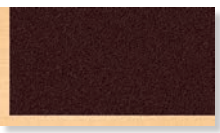
Red – 2793



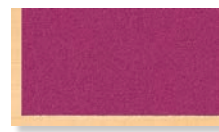
Brick Red – 1875



Black Cherry – 2280



Maroon – 2240



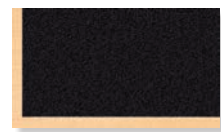
Magenta – 2410



Purple – 2287



Violet Toner – 0246



Midnight Blue - 2767



Dark Blue - 2050



Medium Blue – 2860



Blue – 3000



Light Blue – 2648



Marine Reef Blue – 5425



Teal Blue – 3210



Spring Green – 3555



Emerald Green 0222



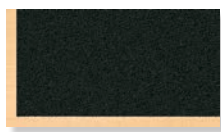
Federal Green – 0259



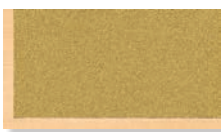
Light Green – 2108



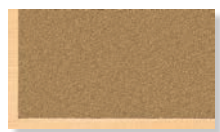
Dark Green – 2030



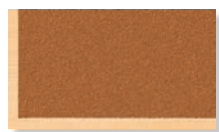
Hunter Green – 2162



Brilliant Gold – 0400



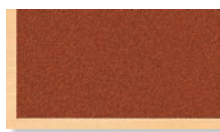
Metallic Gold – 2756



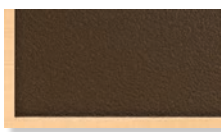
Aztec Gold – 0401



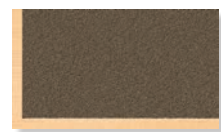
Copper – 0253



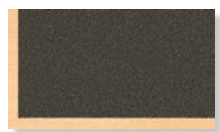
Aztec Copper – 0402



Brown – 2418



Medium Bronze – 0312

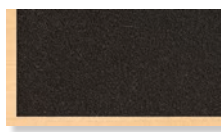


Old Copper – 0314

Satin finish is standard.
Custom paint matching is available.



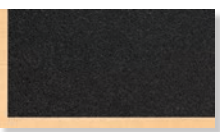
Duranodic Bronze– 3130



Dark Oxide – 1315



Metallic Silver – 8886

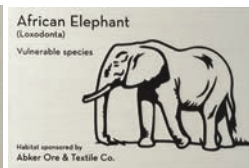


Black – 2025



207 N

POOL ▶
GARDEN ▶
◀ SPA



PLATES PLAQUES



- Choose from brass, nickel silver, copper, aluminum, or stainless steel
- Custom shapes and full color capability
- Custom Fabrication
- Discounts for multiples
- Made in the USA



Quality and Quantity

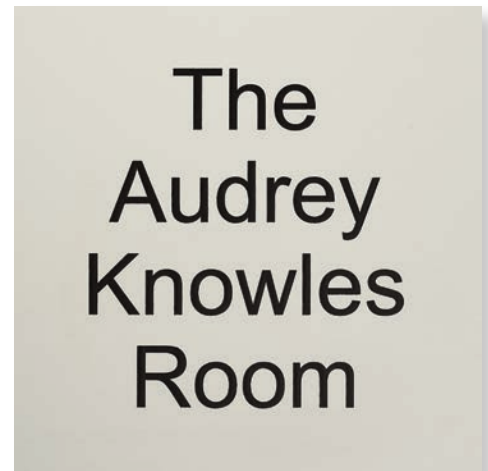
Unique Identification

Unmatched skill and experience in blank and decorated metal products. We provide innovative solutions in metal materials and processes to meet the most stringent requirements. We have more than 60 years of experience providing superior and durable products on time and within any budget.



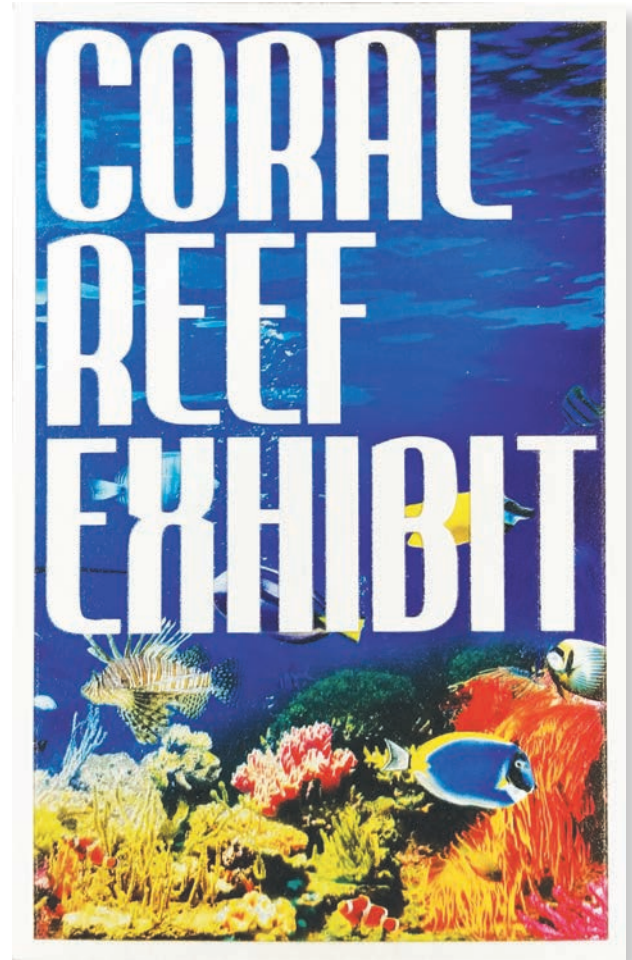


- Model Number Plates
- Machine Tags
- Property Tags
- Bar Code Plates
- QR Code Plates
- Corporate Identification
- Logo Plates
- Interior Signage
- Ornamental Plates



FOUR-COLOR PROCESS FILL

When you want both dimension and the eye-catching beauty of color, look no further than our four-color process filled plates. Our plates offer a unique, durable and economical interior alternative for signage, nameplates, awards, and so much more. We combine chemical etching with our state-of-the-art technology that allows us to create vibrant, multi-color or four-color process filled cavities. Available on any of the etched materials on the following pages.

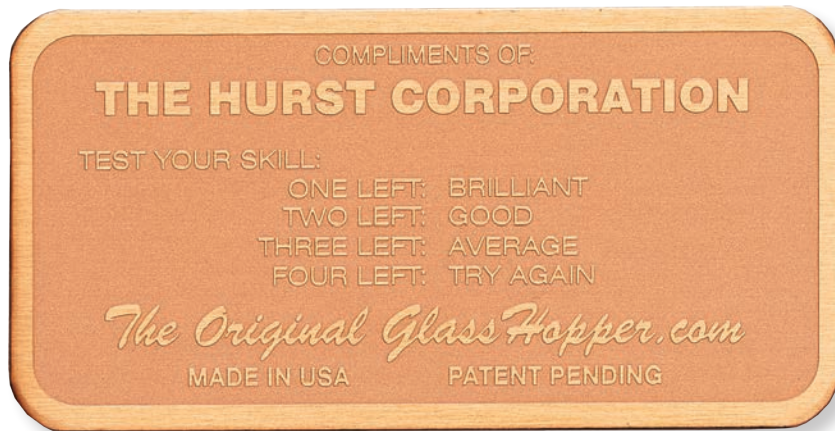
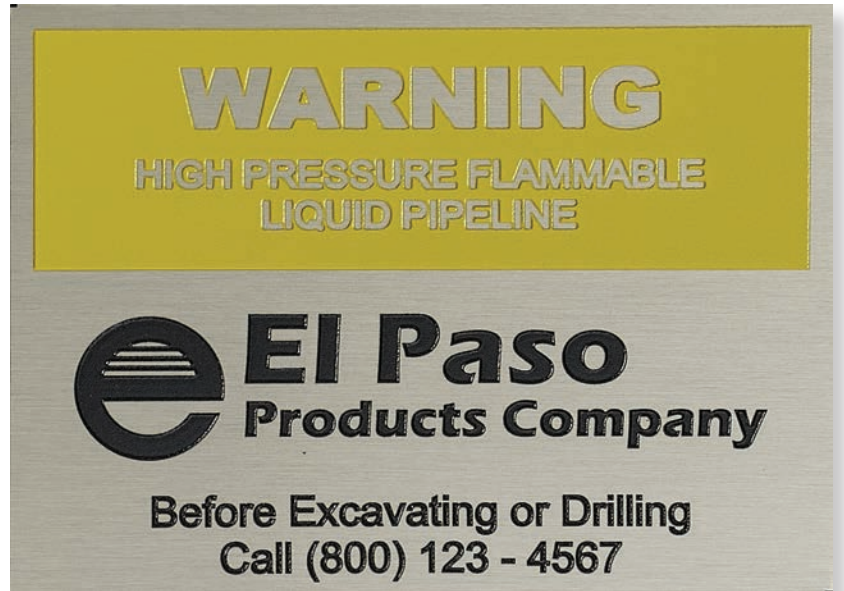


- Interior Signage
- Corporate Identity
- Employee Recognition
- Awards
- Point of Purchase
- Name Plates
- Donor Recognition

Processes:

Etched and Color-Filled

The quality and detail of our etched and color filled products is second to none. We can etch and color-fill on brass, nickel silver, copper, aluminum and stainless steel, providing a long lasting and attractive product.



Etched and Frosted

Our unique frosting process creates a rich contrast in metal finishes, resulting in a product that is unmatched in quality and elegance. Brass, nickel silver or copper can be etched frosted, creating beautiful tone-on-tone works of art.

Etched and Antiqued

It's that extra touch that turns an ordinary plate into something special. Our antique finish can be applied to brass, nickel silver or copper, providing a patina of time-honored elegance to any project.

